



WEST COAST OCEAN DATA PORTAL

Portal Coordination Call
April 18, 2018

Participants

- ▶ Present: Allison, Tanya H., Kate S., Sara G., Melissa R., Jennifer P., Frank P.,

Agenda

- ▶ RPB update
- ▶ Plans for recruiting a new co-chair
- ▶ Work Program review and tasks planning
 - ▶ WA data catalog and tool planning
 - ▶ West Coast wide jurisdictional map
 - ▶ Agency Data Diplomat outreach tasks
- ▶ Portal Development Team Update
- ▶ Round Table updates from members

Regional Planning Body



► Update: All attention and focus currently is on the “vision” framework of the RPB.

We are asking for **your review of this draft, with all comments and edits to be sent to your RPB Co-Lead** (CC'd) for further Caucus dialog, as needed. All input will then be compiled into a new updated draft Regional Vision in the next few weeks.

Comments on this draft by next Friday April 13.

The Regional Vision on this Friday's monthly RPB & WCOP member call.

Text to Review:

ORGANIZED AND ACCESSIBLE OCEAN AND COASTAL DATA

Apply sound science based on accurate up-to-date data

*Facilitate ongoing **discovery of, connectivity to, and** sharing of data and science from ~~all regulatory agencies~~ **through the West Coast Ocean Data Portal***

Include traditional knowledge in databases as appropriate

Work Program Area 1: Data Catalog Tasks

- Track needs and priorities at regional and sub-regional scales
 - Provide catalog curation that will assist RPB, SRPT's in their proposed activities (improved geospatial filtering, new curation facets)
 - Add new records (metadata and map services) to WCODP with associated catalog curation – focused on the needs of the SRPT's.
 - Ocean Health Assessment effort?
- Identify new high priority data collections for incorporation into the WCODP catalog and visualization tools.
 - Data Basin (CA)
 - WA Open Data Portal
 - Others

2018 Portal Work Plan – Task 1 Cont.

Portal Coordination Team Tasks

- Engage in the WA Sub-Regional Planning Team exercise to develop Portal data catalog and functionality for that team.
- Complete an inventory and gap analysis of WA data needs.
- Work with the RPB executive team to generate a West Coast wide jurisdictional map.
- Recruiting data diplomats, and what that means for different agency roles. Provide a description of what we expect for data diplomats to be recruited by members.
-

WA SubRegional Planning Team

<https://docs.google.com/spreadsheets/d/18P2YUyvpWepw13wUc8LWt3vRSJFjkyO19Umk7ScsiaA/edit?usp=sharing>

Data call organized to discuss incorporation of data from state level into the portal.

Data list developed as a “starter” list of data to pull into the Catalog.

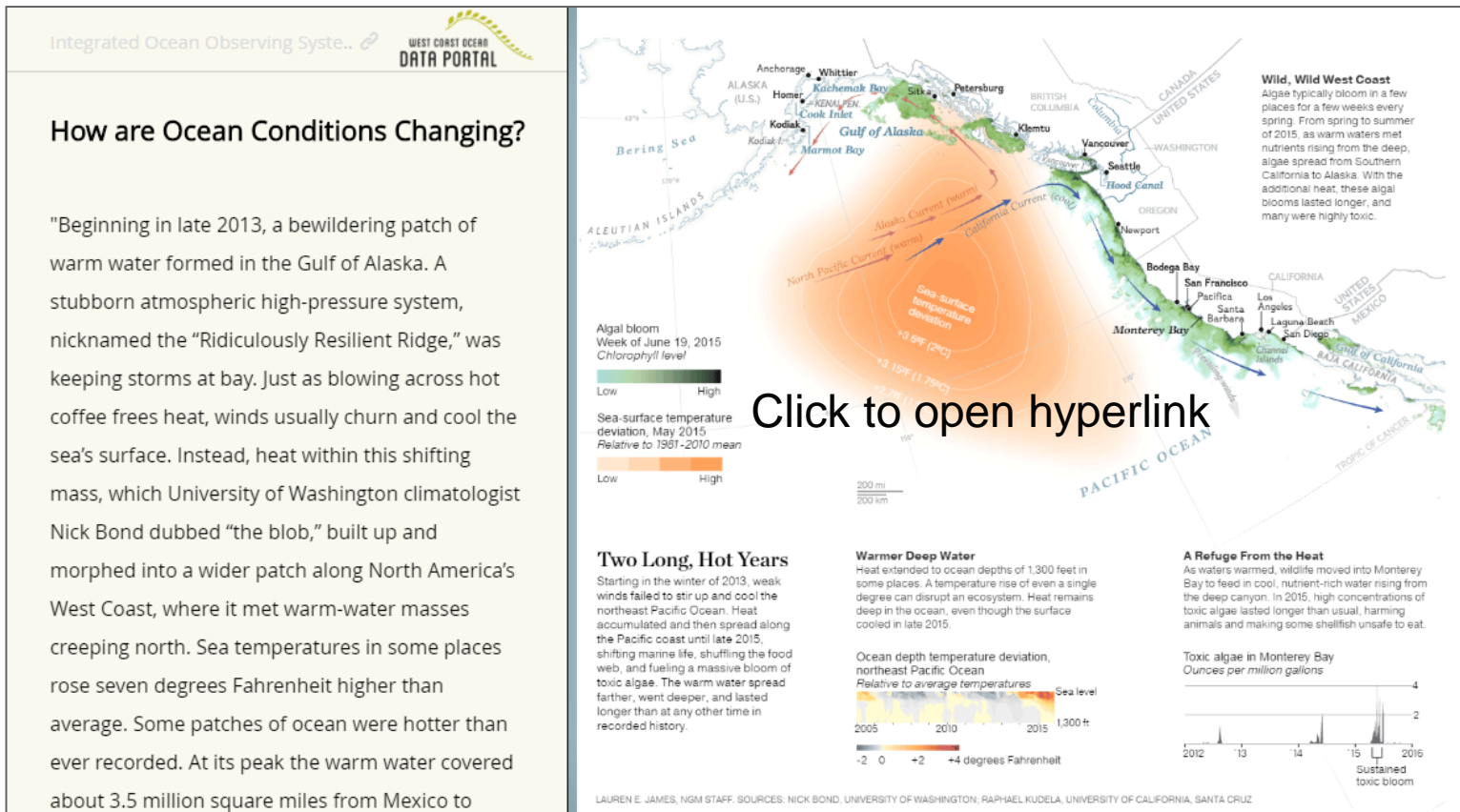
Next Steps:

- Confirm table contents with agency staff, WA SRPT
- Test metadata connections

Data Set/Type	Layer	Draft MSP Reference	Source
Marine Boundaries	Marine Sanctuaries	Appendix A, Map 1	MPA Inventory
	State Boundaries	Appendix A, Map 1	
	Tribal U&A	Appendix A, Map 2	NMFS?
Commercial & Recreational Fishing	All Commercial & Recreational	Appendix A, Map 17	WDFW
Commercial Fishing Activity	Sablefish (Fixed Gear)	Appendix A, Map 18	WDFW
	Groundfish (Bottom Trawl)	Appendix A, Map 19	WDFW
	Pacific Whiting (Mid-water Trawl)	Appendix A, Map 20	WDFW
	Salmon (Troll)	Appendix A, Map 21	WDFW
	Albacore Tuna	Appendix A, Map 22	WDFW
	Pacific Sardine	Appendix A, Map 23	WDFW
	Dungeness	Appendix A, Map 24	WDFW
	Pink Shrimp	Appendix A, Map 25	WDFW
Recreational Fishing Activity	Salmon	Appendix A, Map 26	WDFW
	Bottomfish and Lingcod	Appendix A, Map 27	WDFW
	Pacific Halibut	Appendix A, Map 28	WDFW
	Albacore Tuna	Appendix A, Map 29	WDFW
Recreational Use	Shellfish Beaches	Appendix A, Map 30	WDOH
	Recreational Use Density	Appendix A, Map 33	Surfrider (contract w/DNR)
Human Uses Participatory Mapping	many		NOAA/BOEM Marine Cadastre
Aquaculture	Commercial Harvest Locations	Appendix A, Map 32	WDOH
Marine Life & Habitat	Sea Otter Concentrations	Appendix A, Map 10	WDFW
	Pinniped Haulouts	Appendix A, Map 10	WDFW
	Seabird Colonies	Appendix A, Map 11	WDFW (Catalog of Seabird Colonies)
	Kelp	Appendix A, Map 4	WDNR ShoreZone
	Seagrass	Appendix A, Map 4	WDNR ShoreZone
	Salt Marsh	Appendix A, Map 4	WDNR ShoreZone
	Deep Sea Coral & Sponges	Appendix A, Map 60, 61, 62, 63	NOAA
	Rocky Reefs	Appendix A, Map 65, 66, 67, 68	OSU, NOAA, & BOEM, 2016

Work Program Area 2: New Content Area/ Web Visualization Tool

Generate a new content area and or web visualization tool to support identified region-wide and or sub-regional ocean planning issues or focus areas.



2018 Portal Work Plan – Task 1 Cont.

Portal Coordination Team Tasks

- Engage in the WA Sub-Regional Planning Team through a prioritization of web content ideas
 - Basic visualization capacity – Web applications that contains all of the subset of a data set (subset by WA)
 - Story Maps that highlight specific pieces of the WA subset of concerns (using NEODP, MARCO as templates).

Update from the PDT

- Geoportals upgrade (upcoming)
- Improving Service validations : creating our own web accessible folder (WAF) of WAF's (complete) –

Esri® Geoportal Server

Aggregate geospatial resources for improved discovery, use, and collaboration.

Esri® Geoportal Server is an open source product that enables discovery and use of geospatial resources including datasets, rasters, and web services. It helps organizations manage and publish metadata for their geospatial resources so users can discover and connect to those resources. Geoportal Server supports standards-based clearinghouse and metadata discovery applications.

Geoportal Server was released under the Apache® 2.0 license, which allows developers to freely customize and redistribute the software.

With Geoportal Server, you can do the following:

- **Reduce time and redundancy** of data production by connecting geospatial data and service producers with consumers
- **Maintain data integrity** by allowing organizations to easily share the authoritative version of data among users
- **Enable easy search and discovery** of existing geospatial data and services by allowing users to create and manage descriptions of their geospatial resources and supporting easy-to-use, sophisticated data discovery technologies

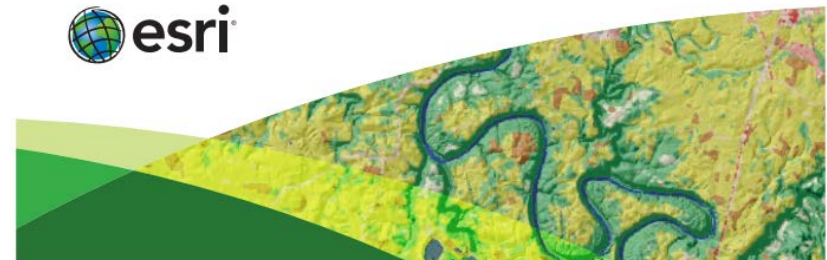


The City of Raleigh, NC, Geoportal is one part of the Open Raleigh Initiative, which makes it easier for citizens to interact with city government.



NOAA National Oceanographic Data Center (NODC) provides long-term stewardship and preservation of ocean data, archiving more than 25,000 data collections from ships, buoys, satellites, numerical models, and a wide variety of other in-water sensors.

esri.com/geoportal



Roundtable Updates

IOOS & RPB conversation

BOEM – contract going forward for the WCODP ~ John Hansen & Andy will work with Frank/Sara to confirm contract

Allison – PFMC Groundfish EFH designated preferred alternatives for groundfish conservation and rockfish conservation areas.

<http://www.soundgis.com/efh/efh2018-metrics/>

Tanya – ICAN – Newsletter article by Terry C on efforts to create a data portal in the Salish Sea. Revival of connections between WCODP and Salish Sea could be something we work to highlight (Pacific Salmon Foundation).

CoastGIS is soliciting - <https://www.uw.is/conferences/coastgis/> End of Sept (27-29).

Ocean Data Portal – Amazon sustainability team (Ana Pinheiro Privette

) – hosted a conference of NGO's and others on establishing a data portal – Tony Lavey has notes on this effort. April 11